

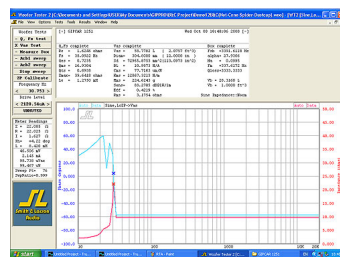
GCB-1242

Written by Administrator

Monday, 06 April 2009 07:34 - Last Updated Friday, 21 October 2016 03:47



{rokbox}images/stories/product/gcb1242a.jpg{/rokbox}
{rokbox}images/stories/product/gcb1242b.jpg{/rokbox}
{rokbox}images/stories/product/gcb1242c.jpg{/rokbox}
{rokbox}images/stories/product/gcb1242d.jpg{/rokbox} □ **GCB-1242**
Power 400+400W.
Impedance 4 Ohm. +4 Ohm.
Frequency response 38Hz. – 2 KHz.
Sensitivity 1W / 1 M. 89 db.
Voice coil Dia. 51 mm.
Magnet Ferrite strontium 156 x 40 mm.



--- BassBox Pro Version 6.20.0 Export Thiele-Small Format
--- Oct 08,2008, Wed 6:49PM
--- GCB 1242

--- Parameters marked with ** are not tested using the WT2

 --- mechanical ---

Fs	38.092E+00 Hz	Free air resonance
Qms	16.930E+00	Q mechanical
Vas	58.778E-03 m^3	Suspension compliance
Cms	77.716E-06 m/N	1/(suspension stiffness)
Mms	224.624E-03 kg	Moving mass
Rms	3.175E+00 kg/s	Mechanical resistance
Xmax **	0.000E+00 m	Maximum acoustic linear motion
Xmech**	0.000E+00 m	Mechanical displacement
Dia	304.800E-03 m	Piston diameter
Sd	72.966E-03 m^2	Piston area
Vd **	0.000E+00 m^3	Displacement volume

--- electrical ---

Qes	723.473E-03	Q electrical
Re	1.625E+00 ohms	Voice coil DC resistance
Le	1.275E-03 Henries	Inductance @1 kHz
Z	10.141E+00 ohms	Impedance @1 kHz
BL	10.987E+00 Tm	Motor force - Newtons/Amp
Pe **	0.000E+00 W	Max Electrical Power

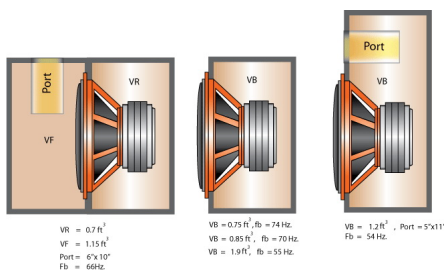
--- electro-mechanical ---

Qts	693.824E-03	Q total
no	421.942E-03 %	1/2-space ref efficiency @ 1m/1W
1-W SPL	88.271E+00 dB	sensitivity at 1m on-axis
2.83V SPL	95.194E+00 dB	sensitivity at 1m on-axis

--- motor constants ---

Krm	4.328E-03 ohms	constant resistive motor impedance
Erm	770.688E-03	exponent resistive motor impedance
Kxm	24.932E-03 Henries	constant reactive motor impedance
Exm	654.586E-03	exponent reactive motor impedance

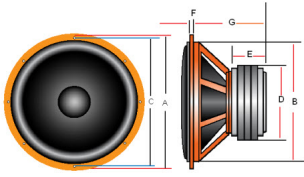
--- End BassBox Pro Export ---



GCB-1242

Written by Administrator

Monday, 06 April 2009 07:34 - Last Updated Friday, 21 October 2016 03:47



Model

A

B

C

D

E

F

G

GCM-622

166.5mm.

143mm.

155mm.

100mm.

27mm.

9mm.

71mm.

GCM625

166.5mm.

143mm.

155mm.

100mm.

27mm.

GCB-1242

Written by Administrator

Monday, 06 April 2009 07:34 - Last Updated Friday, 21 October 2016 03:47

9mm.

71mm.

GCM-645

166.5mm.

143mm.

155mm.

120mm.

35mm.

9mm.

77mm.

GCM-850

205mm.

183mm.

194mm.

120mm.

35mm.

GCB-1242

Written by Administrator

Monday, 06 April 2009 07:34 - Last Updated Friday, 21 October 2016 03:47

9mm.

93mm.

GCB-1040

260mm.

233mm.

247mm.

156mm.

66mm.

11mm

140mm.

GCB-1050

278mm.

238mm.

255mm.

180mm.

70mm.

GCB-1242

Written by Administrator

Monday, 06 April 2009 07:34 - Last Updated Friday, 21 October 2016 03:47

18mm.

140mm.

GCB-1242

314mm.

277mm.

295mm.

156mm.

66mm.

11mm.

155mm

GCB-1242

Written by Administrator

Monday, 06 April 2009 07:34 - Last Updated Friday, 21 October 2016 03:47

GCB-1252

318mm.

280mm.

295mm.

225mm.

77mm.

GCB-1242

Written by Administrator

Monday, 06 April 2009 07:34 - Last Updated Friday, 21 October 2016 03:47

18mm.

163mm.

GCB-1255 ND

320mm.

280mm.

295mm.

203mm.

0

18mm.

197mm.

